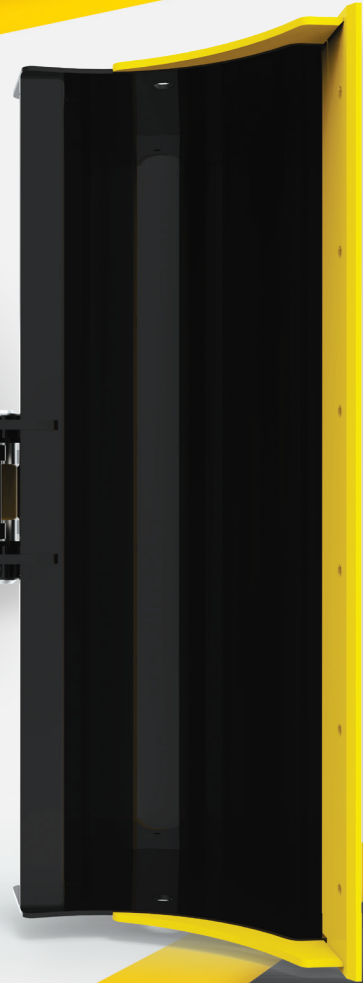
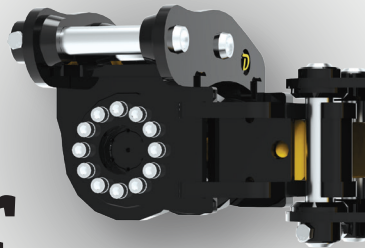




**FOCUSED ON
PERFORMANCE**

D-Lock Tilt Mini Coupler

**AVAILABLE MODELS:
DRAW PIN / FULLY HYDRAULIC**



**NO CYLINDERS
NO PROBLEM**



WWW.DOHERTYDIRECT.NET

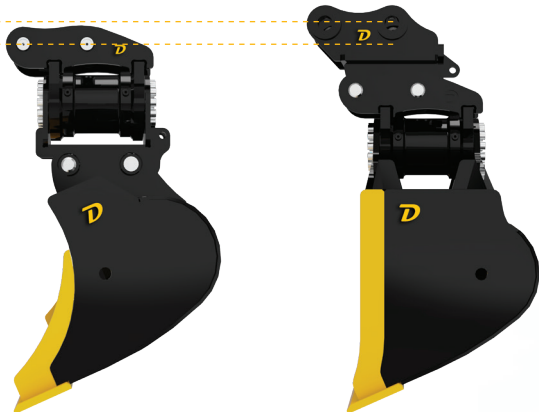
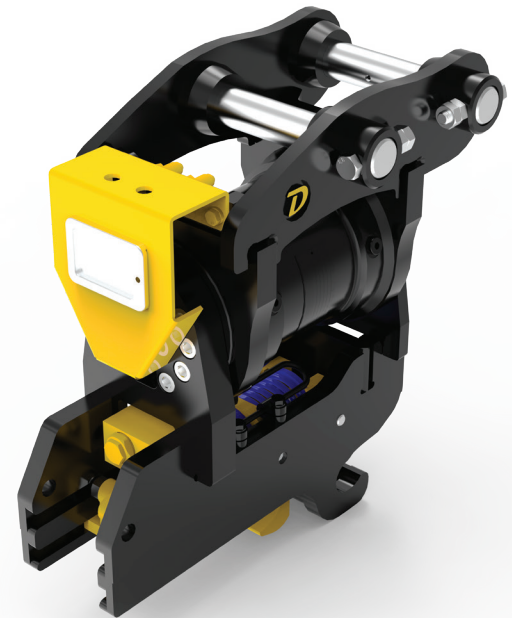
D-Lock Tilt Mini Series | Pull-Pin or Hydraulic



The D-Lock Tilt Mini-Series is available as a simple pull-pin or variable-centre hydraulic version, both of which are fully compliant to ISO13031, AS4772-2008, SafeWork NSW and all major contractor policies. All models tilt 180 degrees, providing maximum versatility on the job site. With minimal components and no tilt cylinders, the D-Lock Tilt Mini range is compact in both height and width, and offers many advantages over other tilt mini couplers on the market. The fully-enclosed actuator eliminates having exposed cylinders at risk of being damaged. The compact design also reduces the width of the tilt coupler, allowing it to dig narrower trenches without obstruction.

Unlike traditional designs, the D-lock Tilt Mini-Series doesn't use cylinders - this ensures your coupler is as narrow as possible, allowing for deep trench digging at a desired width. With no protruding cylinders, the risk of costly cylinder and hose damage is removed. The D-Lock Tilt Mini-Series has been designed with an extremely compact tip radius; more compact, in fact, than the traditional standard coupler and tilt bucket setup. This is to ensure maximum breakout is achieved.

- + Compact and light yet heavy-duty design, specifically for mini excavators
- + Tilts all attachments up to 180 degrees
- + The most narrow design on the market
- + Rated lifting eye
- + D-Lock Tilt combination ensures maximum breakout force
- + Pull-pin or fully-hydraulic coupler



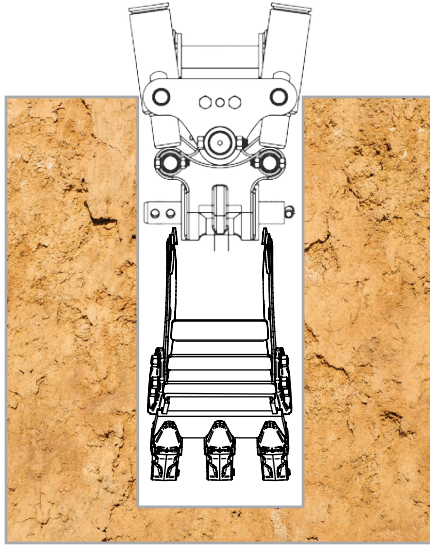
015 D-Lock Tilt Pull-Pin
with Cleaning Bucket

015 D-Lock Pull-Pin Hitch
with Rotary Tilt Bucket

WWW.DOHERTYDIRECT.NET

The Difference is in the Details

CONVENTIONAL MODELS



Protruding, obstructive cylinders. Problems with excavating.

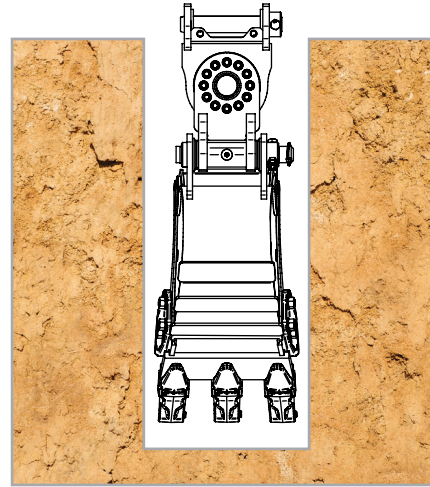
Damage to the cylinders caused by soil, stones and dirt.

Continuous re-lubrication/greasing of the cylinder bearing necessary.

Bearings susceptible to maintenance.

Restricted tilt angle and angle-dependent tilt torque.

D-LOCK TILT MINI



Narrower installation width, compact, robust, not sensitive to dirt, powerful.

Greater accessibility thanks to greater tilt angle.

Lower maintenance costs due to longer service intervals.

Maintenance-free, strong friction bearings.

Constant tilt torque, regardless of tilt angle.

D-Lock Tilt Mini | Pull-Pin Version

Top mount, fully machined after fabrication to guarantee perfect fitment.

Supplied with hard-chrome, greasable pins, used to mount the tilt coupler, leaving your original pins for use in the bucket.

Motor only has two moving parts and can run up to 210 BAR [3000PSI].

Certified SWL lifting point.

Simple pull-pin design with maximum pin contact to eliminate wear.

“Supplied with hard-chrome, greasable pins, used to mount the tilt coupler, leaving your original pins for use in the bucket.”



D-Lock Tilt Mini | Hydraulic Version

Top mount, fully machined after fabrication to guarantee perfect fitment.

Supplied with hard-chrome, greasable pins used to mount the tilt coupler, leaving your original pins for use in the bucket.

Locking cylinder hoses are fully protected with internal routing.

Fully machined side plates, removing weight and weld.

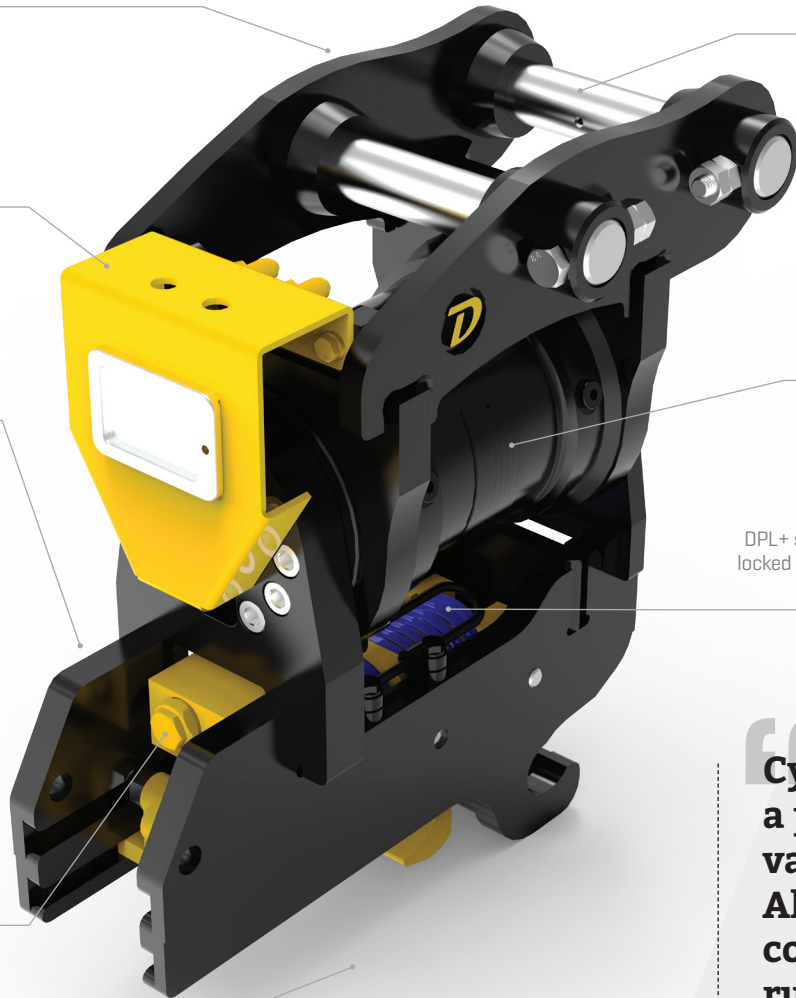
Motor only has two moving parts and can run up to 210 BAR [3000PSI].

DPL+ safety system ensure buckets remain locked in the working position in the event of loss of engagement force.

Cylinder incorporates a pilot operated check valve for added safety. All D-Lock Tilt Mini couplers can also run on pilot pressure reducing fit-up cost.

Variable pin centres.

Cylinder incorporates a pilot operated check valve for added safety. All D-Lock Tilt Mini couplers can also run on pilot pressure reducing fit-up cost.

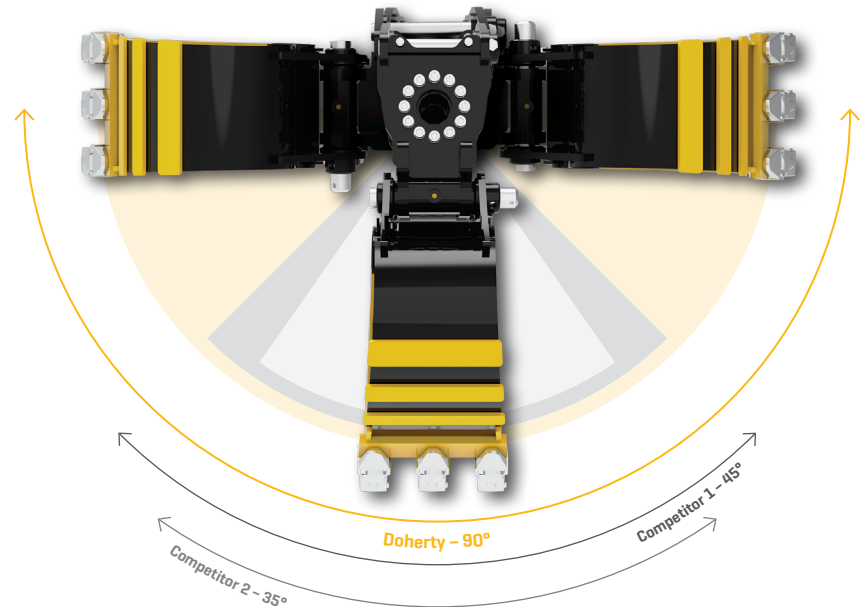


Key Features

- + Tilt angle up to 180 degrees
- + Minimal components
- + Supplied with hard-chrome, greasable mounting-pins
- + Hydraulic or pull-pin models
- + Hydraulic model variable-pin centre range
- + No protruding cylinders
- + Swat design maximising breakout force
- + Industry-leading, two-year, 3000-hour warranty

THE DIFFERENCE IS CRUCIAL

- Doherty - 90°
- Competitor 1 - 45°
- Competitor 2 - 35°

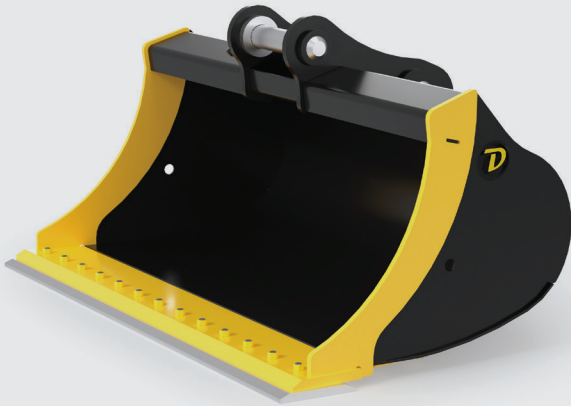


Technical Specifications | Do the homework, compare the competitors

Make	Model	Machine weight [t]	Coupler type	Tilt range [°]	Width [mm]	Weight [kg]	SWL [kg]
Doherty	HBT015-30	0-1.8	Manual Draw Pin	180	182	33	500
Doherty	DHT015-30	0-1.8	Hydraulic	180	182	41	500
Doherty	HBT025-35	1.9-2.7	Manual Draw Pin	180	230	37	1200
Doherty	DHT025-35	1.9-2.7	Hydraulic	180	230	45	1200

Specifications subject to change without notice

Associated Attachments



Cleaning / Mud Buckets with optional bolt-on reversible cutting edge



Digging and Trenching Buckets - full range of widths



Single Tyne Ripper



Spade Frames with full range of spade inserts



WWW.DOHERTYDIRECT.NET

Doherty Engineered Attachments Ltd

NZ +64 (0)7 574 3000 | **AUS** 1800 057 021 | **E** sales@dohertydirect.net

New Zealand

HEAD OFFICE - Postal: PO Box 9339, Greerton, Tauranga 3142, New Zealand. Physical: 98 Paerangi Place, Tauriko, Tauranga 3110, New Zealand

Australia

BRISBANE - Postal: PO Box 701, Annerley, QLD 4103, Australia. Physical: 498 Progress Road, Wacol, QLD, 4076, Australia

MELBOURNE - Factory 4, 21-22, National Drive, Hallam, VIC 3803, Australia



ISO 9001:2015

QUALITY MANAGEMENT



ISO 14001:2015

ENVIRONMENTAL MANAGEMENT



ISO 45001:2018

OCCUPATIONAL HEALTH & SAFETY

© Copyright Doherty Engineered Attachments Ltd, Doherty products are patent protected. All information contained herein is strictly confidential and intended for the individual or entity it is addressed/distributed to. Copies/unauthorised distribution is strictly prohibited. Doherty Engineered Attachments Ltd reserves the right to amend specifications/detail without prior notification.

[f facebook.com/DohertyAttachments](https://www.facebook.com/DohertyAttachments) [y youtube.com/user/DohertyAttachments](https://www.youtube.com/user/DohertyAttachments) [in linkedin.com/company/doherty-couplers-and-attachments](https://www.linkedin.com/company/doherty-couplers-and-attachments) [i instagram.com/dohertyattachments](https://www.instagram.com/dohertyattachments)