



**FOCUSED ON
PERFORMANCE**

D-Lock Coupler Range



WWW.DOHERTYDIRECT.NET

WWW.DOHERTYDIRECT.NET

“We look for the best products in the industry but it comes down to the people more than anything else.

The support you get from the team is the most important thing. We use Doherty because of their reputation They’ve got a good team and are really easy to deal with.”

Bryce Kilpatrick | Active Survey Ltd



An Introduction To Doherty

Our Vision

“To build a successful global company and enjoy being part of the journey.”

Our Mission

- 1 To give 110% in providing best in class product that is safe, simple and serviceable, with support that is second to none.**
- 2 To provide an enjoyable experience and environment for customers and staff that exceeds their expectations.**

Our Promise

“To deliver safe, high-quality earthmoving attachments which represent value for money, improve machine productivity and exceed expectations.”

Who is Doherty Engineered?

- + As part of the Kinshofer Group, Doherty Couplers & Attachments are leaders in innovation, safety and quality for quick couplers, buckets and other earthmoving attachments.
- + Over 20 years' experience in the design, manufacture and distribution of the fully compliant D-Lock coupler range and earthmoving attachments.
- + One of few manufacturers globally to offer fully automatic quick couplers 100% compliant to Australian standard AS4772-2008, WorkCover NSW Position paper WC01783, European EN474 standard, ISO 13031 International standard and all major contractor policies.
- + Based in New Zealand with a wholly owned subsidiary in Australia and distributors in USA, UK & France, the Doherty Group employs over 30 people in New Zealand & Australia, and sells 30 products in more than 20 markets.

Quality Focused

“Do It Right the First Time and Every Time.”

All company personnel understand quality is their responsibility, starting at the drawing board and finishing when product is delivered and fitted.

To achieve our quality policy every stage has set QA procedures in place, which we are constantly monitoring and reviewing to ensure we deliver on our promise.

Key Partners

In addition to the World Class Attachments that are designed and manufactured in-house, Doherty has a number of partnerships with other world leading manufacturers to ensure we offer the best possible solutions.



D-Lock Coupler

When Safety is Paramount

ISO 13031 Compliant, the D-Lock Coupler heralds a new era in fully automatic quick couplers.

The simple design of the D-Lock combined with the world leading safety features, makes the D-Lock the safest coupler on the market today. The D-Lock Coupler is dual locking, meaning attachments remain securely engaged on both pins in the event of loss of engagement force.

Compliant to Australian standard AS4772-2008, WorkCover NSW Position paper WC01783, European EN474 standard, ISO 13031 International standard and all major contractor policies. Compact design with only two hoses, minimal moving parts, no greasing, and no complicated operating sequence to follow, are just a few of the features which put the D-Lock at the forefront of coupler performance worldwide.



D-Lock Coupler | when safety is paramount



D-Lock Coupler: Available for all machines from 3.5 to 120 tonnes, their compact design with minimal moving parts put them at the forefront of coupler performance worldwide. When safety is paramount, demand the D-Lock Coupler.

Features

The D-Lock Coupler is the most reliable, safe, cost effective and user friendly coupler on the global market:

- + Automatic front lock – Locks the front pin in the event the rear pin is not secured
- + Multi pin centre, picks up all attachments in the same weight class
- + Multi pin on 140 class and above allows pick up of multi pin diameters
- + Highly visible front lock indicator
- + Safety system does not rely on gravity
- + Dual pin lock – Locks both front and rear pins in the event of loss of engagement force
- + Unlock process is designed to release only when the operator intends to do so, in a controlled and safe manner
- + Only requires two hydraulic lines
- + Simple yet safe unlock procedure eliminates accidental releases
- + Compact design – Improving machine performance
- + No greasing or lubrication required

D-Lock Coupler Primary lock: The sliding jaw primary lock allows for multi pin centres to be accepted and is operated by a unique double-skinned, double-acting hydraulic cylinder rated for continuous use at 320 bar and tested to 400 BAR. No head feed tube or pressure reducer is required.

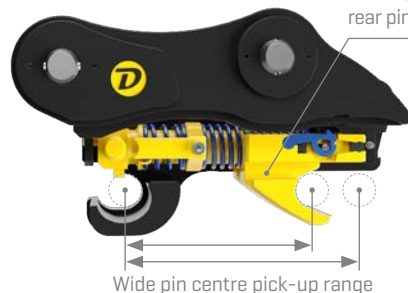
Double skinned cylinder eliminates feed tube

Integral check valve

Pressure spike protection built in on 140 class and above

Easy access to cylinder ports

Replaceable bolted front lock



DPL+ locking system locks both front and rear pin independently of the primary lock

Wide pin centre pick-up range

Check List/Compliance/Comparison

Picks up multi pin centres	✓	Dual independent Mechanical Safety Locks on both	✓
Picks up multi pin diameter 140 class and above	✓	front and rear pin	✓
Only requires 2 hydraulic lines	✓	Prevents implement swinging on front pin in event of loss of	✓
Locks Front Pin in event rear pin is not engaged	✓	engagement forces	✓
Additional safety built in with heavy duty compression	✓	No feed tube on lock cylinder from head port	✓
spring preventing primary lock releasing in the event of	✓	Cylinder has internal safety check valve	✓
loss of engagement force	✓	Cylinder spike protection on 140 class and above	✓

Dual Pin Locking plus (DPL+) System

Front lock automatically engages the moment the rear jaw is activated negating any chance of the bucket falling off if the operator misses the rear pin.

DPL+ safety system locks both front and rear pins in the event of loss of engagement forces and the primary jaw safety lock is backed up by a independent heavy duty compression spring.

WWW.DOHERTYDIRECT.NET

DPL+ safety system ensures attachments cannot swing on the front pin in the event of loss of engagement forces.

The locking notch spacing is offset between left and right sides to ensure at least one Pawl is engaged at all times

Lifting eye offset to one side to avoid obstacles and built into side plate for structural integrity

Jaw Lock Pawls are spring biased to the locked position and can only be retracted by deliberate activation of the cylinder

Mechanical Jaw Stop built into the chassis for cylinder protection and to contain all internal working parts

During normal operation the angled face is capable of wedging two different diameter pins. Each model designed to pick up two designated diameters
* 140 models and above



Separate springs ensure both pins remain locked in the working position in the event of loss of engagement force

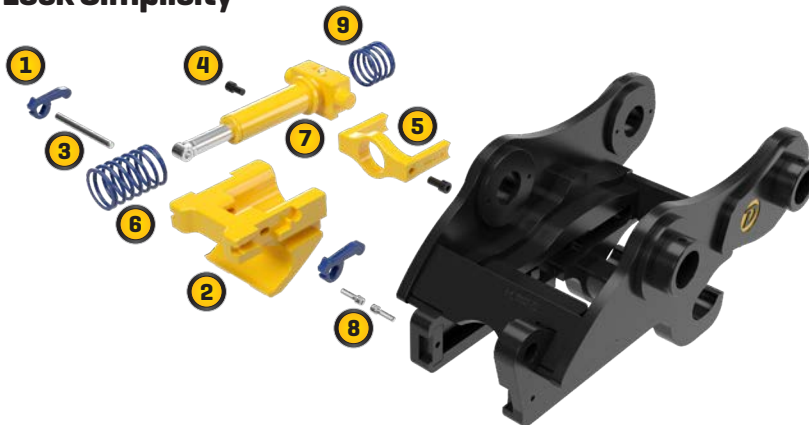
Opening smaller than pin diameter

Separate independent locks on front and rear pins

Safety first – with the D-Lock Coupler

The D-Lock range locks both front and rear pins and does not require a safety pin. D-Lock Couplers are compliant to Australian standard AS4772-2008, European EN474 standard, ISO 13031 International standard and all major contractor policies.

D-Lock Simplicity



The D-Lock contains fewer parts than any other fully compliant automatic double lock coupler available in Australasia.

I've used Doherty since 2017, when my new excavator came with a D-Lock Tilt. We stick with them because of the build quality and great customer support.

Josh Simpson | SB Civil

D-Lock Tilt

The Ultimate Coupler



WHEN PRODUCTIVITY IS PARAMOUNT DEMAND THE D-LOCK TILT.

Compact in design, powerful and virtually maintenance free, the D-Lock Tilt Coupler incorporates a precision-built actuator, ensuring trouble-free operation.

The D-Lock is standard on the D-Lock Tilt and available for use on all Tiltrotators



D-Lock Tilt | The Ultimate Coupler



The D-Lock Tilt has been designed with a compact and narrow body for better visibility and performance, giving it serious benefits over other brands. The D-Lock Tilt allows operators to simply tilt all attachments rather than having to move the entire machine, improving the productivity and versatility of the machine resulting in increased profits.

Features

Compact in design, powerful and virtually maintenance free, the D-Lock Tilt Coupler incorporates a precision-built actuator, ensuring trouble-free operation.

- + Compact design – improving machine performance
- + Simplified connections and controls
- + Up to 180 degrees of tilt
- + Actuator only has two moving parts and is triple sealed
- + Only requires four hydraulic lines [2 for the tilt, 2 for the hydraulic coupler]
- + Fully guarded hoses
- + No unwanted movement
- + No pins or bushes to wear out



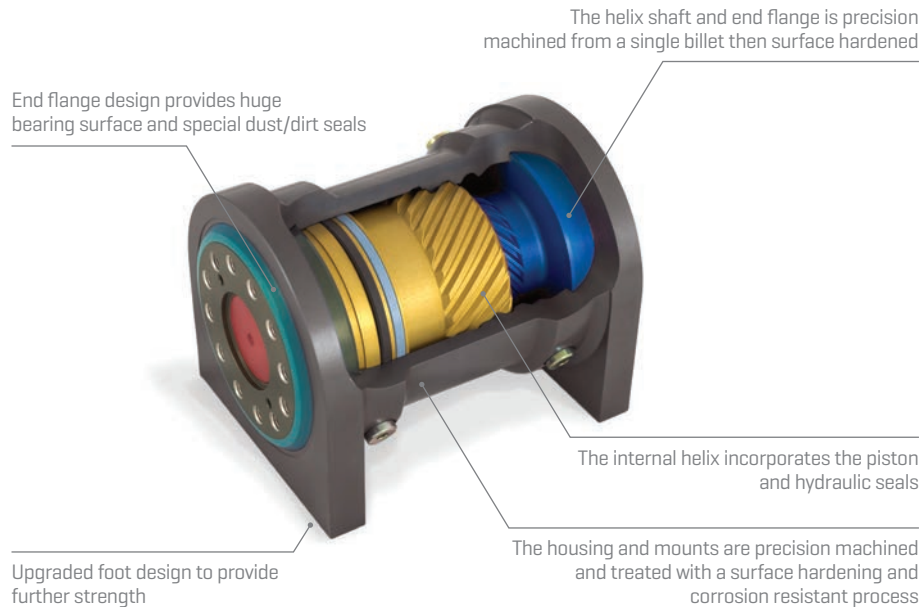
Warranty:

Industry leading 2 year or 3000 hour [which ever occurs first] warranty.



The Internals: Doherty Power Actuator at a Glance

- + Slim structure
- + Maintenance-free
- + Multiple connection ports
- + Specifically designed for excavator attachments
- + Triple sealed
- + Simple assembly
- + Only two moving parts
- + Wide tilting range, up to 180 degree tilt range

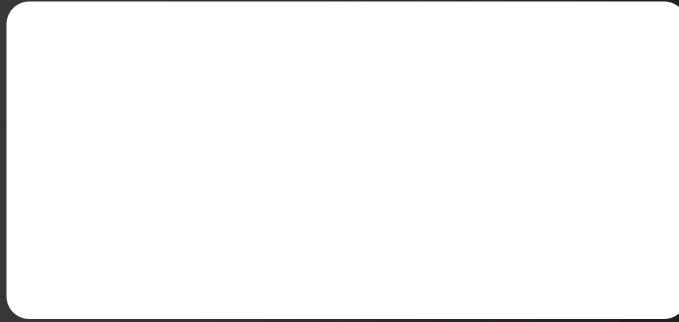


WWW.DOHERTYDIRECT.NET

I've lost count how many Doherty hitches I've bought over the years. The back-up service is fantastic.

When they started making buckets, I gave them a go, too. They do a really good bucket – the Powerdig.

Chris Robinson | Robinson's Earthmoving



WWW.DOHERTYDIRECT.NET

Doherty Engineered Attachments Ltd

NZ +64 [0]7 574 3000 | **AUS** 1800 057 021 | **E** sales@dohertydirect.net

New Zealand

HEAD OFFICE - Postal: PO Box 9339, Greerton, Tauranga 3142, New Zealand. Physical: 98 Paerangi Place, Tauriko, Tauranga 3110, New Zealand

Australia

BRISBANE - Postal: PO Box 701, Annerley, QLD 4103, Australia. Physical: 498 Progress Road, Wacol, QLD, 4076, Australia

MELBOURNE - Factory 4, 21-22, National Drive, Hallam, VIC 3803, Australia



ISO 9001:2015

QUALITY MANAGEMENT



ISO 14001:2015

ENVIRONMENTAL MANAGEMENT



ISO 45001:2018

OCCUPATIONAL HEALTH & SAFETY

© Copyright Doherty Engineered Attachments Ltd, Doherty products are patent protected. All information contained herein is strictly confidential and intended for the individual or entity it is addressed/distributed to. Copies/unauthorised distribution is strictly prohibited. Doherty Engineered Attachments Ltd reserves the right to amend specifications/detail without prior notification.

facebook.com/DohertyAttachments youtube.com/user/DohertyAttachments linkedin.com/company/doherty-couplers-and-attachments instagram.com/dohertyattachments

MA22055