



**DIRECT MOUNT  
DIGGING BUCKETS**

---

# **Powerdig Series**



[WWW.DOHERTYDIRECT.NET](http://WWW.DOHERTYDIRECT.NET)

# Powerdig Series | Direct mount digging buckets



The Powerdig series has been designed to maximise breakout and minimise fuel usage, resulting in greater productivity and maximum return on your investment.

The design ensures maximum efficiency when used with a quick coupler and having the ability to be direct mounted to the machine means no downtime.

The reduced tip radius, tapered sides and deep double radius floor provides maximum power and minimal resistance when digging and unloading. The unique shape ensures 100% bucket fill factor resulting in maximum payload.

Built for tough ground, the Powerdig series standard is Heavy Duty [HD] with the option of Extra Heavy Duty [XHD] for very aggressive digging in abrasive material. Additional wear packages are available.



## Powerdig Features

[WWW.DOHERTYDIRECT.NET](http://WWW.DOHERTYDIRECT.NET)



Reduced tip radius and 100% bucket fill factor proving maximum breakout.



Tapered sides minimising ground resistance.



Side cheeks inside the rolling for protection and wear strips 100% width of the bucket providing full protection.



Side wear plates for side protection (BD140 and larger).

Removable Pins



Direct mount (removable pins) eliminating the need to cut out and replace welded pins which are worn therefore maximising uptime.

“Using good quality, reliable equipment is important because you don’t want any downtime.

I use Doherty buckets because the shape allows for easy filling and the Hardox steel keeps wear and tear to a minimum.”

Shane Brownell | Brownell Earthmoving

## HD material spec

Doherty HD spec as standard ensures maximum life and minimum downtime. The bucket rolling including the wear strips, leading edges and outside wear plates are all from wear resistant steel with a minimum 400 Brinell hardness and the main cutting edge from an even better grade with a minimum 450 Brinell hardness.

Toque beam Grade 350\*

400BH Leading edges\*

400BH Side wear plates\*

400BH Wear strips\*

450BH cutting edge\*

*\* Standard paint colour is black, parts highlighted for ease of illustration only.*

## Great efficiency

The Powerdig shape allows the bucket to cut through the ground more effectively with minimal resistance and the unique deep double radius design provides maximum payload. These combined benefits result in a bucket which digs faster and reduces fuel consumption.

## Tool Carrier System

The Powerdig series are all fitted as standard with Doherty's Tool Carrier System [TCS] which simplifies the task of transporting buckets when walking the machine.



## G.E.T

Custom GET packages are available on request. As standard, Doherty use J series GET and weld in banana side cutters.

## Wear Package Options



[WWW.DOHERTYDIRECT.NET](http://WWW.DOHERTYDIRECT.NET)

**We use Doherty  
because safety is our  
#1 priority.**

**Versatility and the  
safety features make  
Doherty products our  
preferred choice.**

Mark Taggart | Taggart Earthmoving



## Range

Doherty HD spec as standard ensures maximum life and minimum downtime. The bucket rolling including the wear strips, leading edges and outside wear plates are all from wear resistant steel with a minimum 400 Brinell hardness and the main cutting edge from an even better grade with a minimum 450 Brinell hardness.



Mini 1-5.5 Tonne Machines



Medium 6-40 Tonne Machines



Large 40-85 Tonne Machines

## Custom built designs

In addition to the Powerdig series Doherty offer a full custom design and build service, examples shown below:



Cat 374 Rock Bucket



Liebherr R964B Rock Bucket



Hitachi ZX200 Vee Bucket

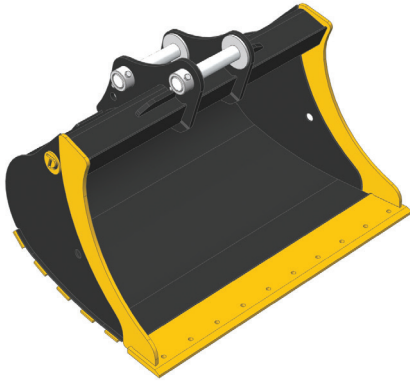


Doosan DX340 Riddle Bucket

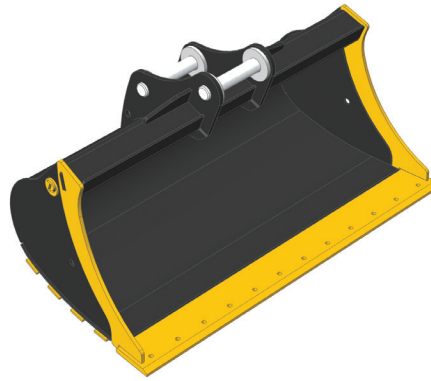
# Cleaning & Mud Buckets

Incorporate all the advantages of the Powerdig series

[WWW.DOHERTYDIRECT.NET](http://WWW.DOHERTYDIRECT.NET)



Mud bucket BM series for  
Australian Market



Cleaning bucket BC series for  
New Zealand Market

All bolt on edges are predrilled as standard to allow fitment of a reversible bolt on cutting edge.

**For the ultimate package combine the Doherty Powerdig series with our World leading Quick Coupler range**



D-Lock Coupler

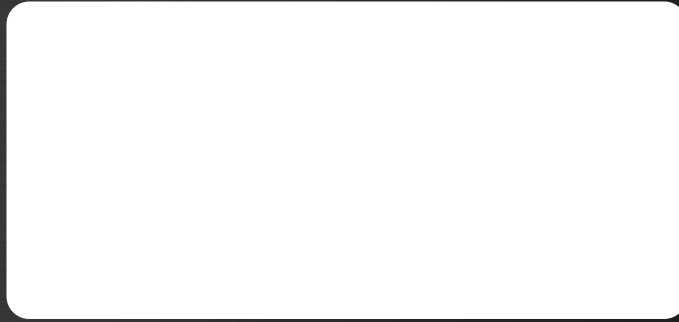


D-Lock Tilt Coupler

**We use the Doherty D-Lock Tilt coupler because it enables us to work around underground services confidently.**

**I like the fact it's dual pin locking, has a compact design, as well as being really simple to operate. The central lifting lug is ideal in my line of work too.**

Craig Severn | Severn Excavations



**WWW.DOHERTYDIRECT.NET**

**Doherty Engineered Attachments Ltd**

**NZ** +64 [0]7 574 3000 | **AUS** 1800 057 021 | **E** sales@dohertydirect.net

**New Zealand**

HEAD OFFICE - Postal: PO Box 9339, Greerton, Tauranga 3142, New Zealand. Physical: 98 Paerangi Place, Tauriko, Tauranga 3110, New Zealand

**Australia**

BRISBANE - Postal: PO Box 701, Annerley, QLD 4103, Australia. Physical: 498 Progress Road, Wacol, QLD, 4076, Australia

MELBOURNE - Factory 4, 21-22, National Drive, Hallam, VIC 3803, Australia



**ISO 9001:2015**

QUALITY MANAGEMENT



**ISO 14001:2015**





ENVIRONMENTAL MANAGEMENT



**ISO 45001:2018**

OCCUPATIONAL HEALTH & SAFETY

© Copyright Doherty Engineered Attachments Ltd, Doherty products are patent protected. All information contained herein is strictly confidential and intended for the individual or entity it is addressed/distributed to. Copies/unauthorised distribution is strictly prohibited. Doherty Engineered Attachments Ltd reserves the right to amend specifications/detail without prior notification.

 facebook.com/DohertyAttachments  youtube.com/user/DohertyAttachments  linkedin.com/company/doherty-couplers-and-attachments  instagram.com/dohertyattachments

MA22095