



DOHERTY
COUPLERS AND ATTACHMENTS
A KINSHOFER COMPANY

FOCUSED ON
PERFORMANCE

Snaplock+ Coupler Range



WWW.DOHERTYDIRECT.NET

WWW.DOHERTYDIRECT.NET

**“We use Doherty
because safety is our
#1 priority.”**

**Versatility and the
safety features make
Doherty products our
preferred choice.”**

Mark Taggart | Taggart Earthmoving



An Introduction To Doherty

Our Vision

“To build a successful global company and enjoy being part of the journey.”

Our Mission

- 1 To give 110% in providing best in class product that is safe, simple and serviceable, with support that is second to none.**
- 2 To provide an enjoyable experience and environment for customers and staff that exceeds their expectations.**

Our Promise

“To deliver safe, high-quality earthmoving attachments which represent value for money, improve machine productivity and exceed expectations.”

Who is Doherty Engineered?

- + As part of the Kinshofer Group, Doherty Couplers & Attachments are leaders in innovation, safety and quality for quick couplers, buckets and other earthmoving attachments.
- + Over 20 years' experience in the design, manufacture and distribution of the fully compliant Snaplock+ coupler range and earthmoving attachments.
- + One of few manufacturers globally to offer fully automatic quick couplers 100% compliant to Australian standard AS4772-2008, WorkCover NSW Position paper WC01783, European EN474 standard, ISO 13031 International standard and all major contractor policies.
- + Based in New Zealand with a wholly owned subsidiary in Australia and distributors in USA, UK & France, the Doherty Group employs over 30 people in New Zealand & Australia, and sells 30 products in more than 20 markets.

Quality Focused

“Do It Right the First Time and Every Time.”

All company personnel understand quality is their responsibility, starting at the drawing board and finishing when product is delivered and fitted.

To achieve our quality policy every stage has set QA procedures in place, which we are constantly monitoring and reviewing to ensure we deliver on our promise.

Key Partners

In addition to the World Class Attachments that are designed and manufactured in-house, Doherty has a number of partnerships with other world leading manufacturers to ensure we offer the best possible solutions.



Snaplock+ Coupler

When Safety is Paramount

ISO 13031 Compliant, the Snaplock+ Coupler heralds a new era in fully automatic quick couplers.

The simple design of the Snaplock+ combined with the world leading safety features makes the Snaplock+ the safest coupler on the market today. The Snaplock+ Coupler is dual locking, meaning attachments remain securely engaged on both pins in the event of loss of engagement force.

Compliant to Australian standard AS4772-2008, WorkCover NSW Position paper WC01783, European EN474 standard, ISO 13031 International standard and all major contractor policies. Compact design with only two hoses, minimal moving parts, no greasing and no complicated operating sequence to follow are just a few of the features which put the Snaplock+ at the forefront of coupler performance worldwide.



Snaplock+ Coupler | when safety is paramount



Snaplock+ Coupler: Available for all machines from 3.5 to 120 tonnes, their compact design with minimal moving parts put them at the forefront of coupler performance worldwide. When safety is paramount demand the Snaplock+ Coupler.

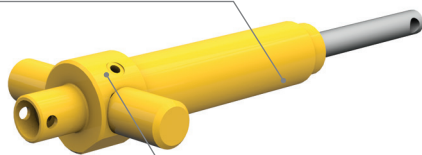
Features

The Snaplock+ Coupler is the most reliable, safe, cost effective and user friendly coupler on the global market:

- + Automatic front lock – Locks the front pin in the event the rear pin is not secured
- + Multi pin centre, picks up all attachments in the same weight class with the same pin diameter
- + Highly visible front lock indicator
- + Safety system does not rely on gravity
- + Dual pin lock – Locks both front and rear pins in the event of loss of engagement force
- + Unlock process is designed to release only when the operator intends to do so, in a controlled and safe manner
- + Simple yet safe unlock procedure eliminates accidental releases
- + Only requires two hydraulic lines
- + Compact design – Improving machine performance
- + No greasing or lubrication required

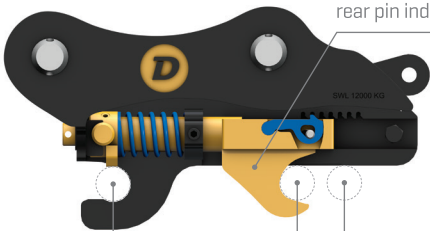
Snaplock+ Coupler Primary lock: The sliding jaw primary lock allows for multi pin centres to be accepted and is operated by a unique double skinned double acting hydraulic cylinder utilising full system pressure. No head feed tube or pressure reducer is required.

Double skinned cylinder eliminates feed tube



Easy access to cylinder ports

DPL locking system locks both front and rear pin independently of the primary lock



Wide pin centre pick up range

Check List/Compliance/Comparison

Features	Doherty Snaplock+
Picks up multi pin centres	✓
Only requires 2 hydraulic lines	✓
Locks Front Pin in event rear pin is not engaged	✓
Dual independent Mechanical Safety Locks on both front and rear pin	✓
Prevents implement swinging on front pin in event of loss of engagement forces	✓
No feed tube on lock cylinder from head port	✓
Cylinder has internal safety check valve	✓

Dual Pin Locking (DPL) System

Front lock automatically engages the moment the rear jaw is activated negating any chance of the bucket falling off if the operator misses the rear pin.

DPL safety system locks both front and rear pins in the event of loss of engagement forces.

DPL safety system ensures attachments cannot swing on the front pin in the event of loss of engagement forces.

Automatic front mechanical lock and visual indicator

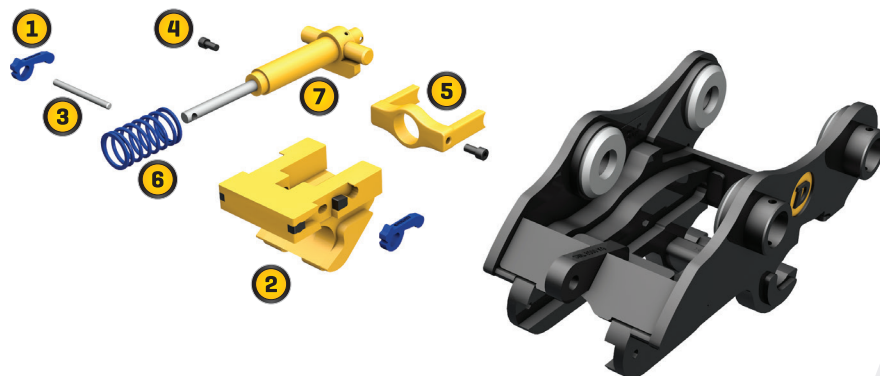
Certified lifting eye



Safety first – with the Snaplock+ Coupler

The Snaplock+ range locks both front and rear pins and does not require a safety pin. Snaplock+ Couplers are compliant to Australian standard AS4772-2008, European EN474 standard, ISO 13031 International standard and all major contractor policies.

Snaplock+ Simplicity



The Snaplock+ contains fewer parts than any other fully compliant automatic double lock coupler available in Australasia.

WWW.DOHERTYDIRECT.NET

“12 months ago, we purchased two Doherty quick couplers and the guys love them. We look for the best products in the industry but it comes down to the people more than anything else.”

The support you get from the team is the most important thing. We use Doherty because of their reputation. They’ve got a good team and are really easy to deal with.”

Bryce Kilpatrick | Active Survey Ltd

Snaplock+ Tilt

The Ultimate Coupler



WHEN PRODUCTIVITY IS PARAMOUNT DEMAND THE SNAPLOCK+ TILT.

Compact in design, powerful and virtually maintenance free, the Snaplock+ Tilt Coupler incorporates a precision-built actuator, ensuring trouble-free operation.

The Snaplock+ is standard on the Snaplock+ Tilt and available for use on all Tiltrotators



Snaplock+ Tilt | The Ultimate Coupler



The Snaplock+ Tilt has been designed with a compact and narrow body for better visibility and performance, giving it serious benefits over other brands. The Snaplock+ Tilt allows operators to simply tilt all attachments rather than having to move the entire machine, improving the productivity and versatility of the machine resulting in increased profits.

Features

Compact in design, powerful and virtually maintenance free, the Snaplock+ Tilt Coupler incorporates a precision-built actuator, ensuring trouble-free operation.

- + Compact design – improving machine performance
- + Simplified connections and controls
- + Up to 180 degrees of tilt
- + Actuator only has two moving parts and is triple sealed
- + Integral overload protection standard from 4 tonne upwards
- + Only requires four hydraulic lines
- + Fully guarded hoses
- + No unwanted movement
- + No pins or bushes to wear out



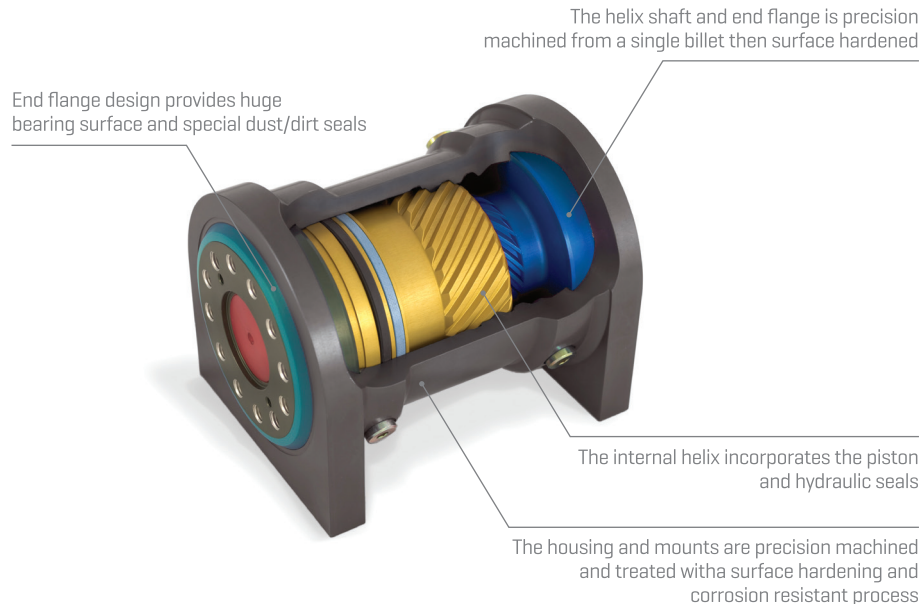
Warranty:

Industry leading 2 year or 3000 hour (which ever occurs first) warranty.



The Internals: Doherty Power Actuator at a Glance

- + Slim structure
- + Maintenance-free
- + Multiple connection ports
- + Triple sealed
- + Specifically designed for excavator attachments
- + Simple assembly
- + Only two moving parts
- + Integral relief valve
- + Wide tilting range, up to 180 degree tilt range



WWW.DOHERTYDIRECT.NET

We use the Doherty Snaplock+ Tilt coupler because it enables us to work around underground services confidently.

I like the fact it's dual pin locking, has a compact design, as well as being really simple to operate. The central lifting lug is ideal in my line of work too.

Craig Severn | Severn Excavations

AUTHORISED DISTRIBUTOR



WWW.DOHERTYDIRECT.NET

Doherty Engineered Attachments Ltd

NZ +64 (0)7 574 3000 | **AUS** 1800 057 021 | **E** sales@dohertydirect.net

New Zealand

HEAD OFFICE - Postal: PO Box 9339, Greerton, Tauranga 3142, New Zealand. Physical: 98 Paerangi Place, Tauriko, Tauranga 3171, New Zealand

Australia

BRISBANE - Postal: PO Box 701, Annerley, QLD 4103, Australia. Physical: 2 / 2642 Ipswich Road, Darra, QLD, 4076, Australia

MELBOURNE - Factory 4, 21-22, National Drive, Hallam, VIC 3803, Australia

© Copyright Doherty Engineered Attachments Ltd, Doherty products are patent protected. All information contained herein is strictly confidential and intended for the individual or entity it is addressed/distributed to. Copies/unauthorised distribution is strictly prohibited. Doherty Engineered Attachments Ltd reserves the right to amend specifications/detail without prior notification.